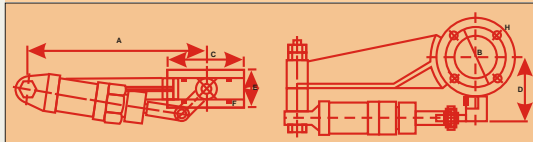
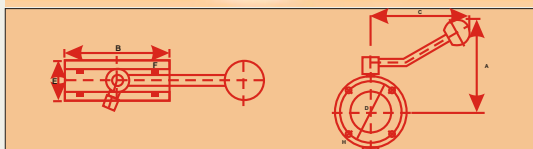


Butterfly Valves



Butterfly valves are the most efficient and reliable sealing Isolation valve mechanism under high vacuum working conditions. A vacuum seal provided around the plate periphery in the main body of the valve ensures fail proof working of the valve. For efficient working of the valve it is advised to ensure that the sealing plates are facing atmosphere.

These valves are of small in terms of thickness which ensures easy and faster passage for air and gases and are ideally suited for "In-line" isolation purpose. Though the butterfly valve is not intended to be used as an independent valve, it is widely used as a Baffle Valve in union with a chevron baffle at the top of a Diffusion Pump. These valves are offered in stainless steel SS-304 non-magnetic AISI quality high carbon steel chromium plated construction and they can be manually or pneumatically operated as per customer choice.

Technical Data of Manual Butterfly Valve (mm)

Code Size	QSV 1"	QSV 2"	QSV 3"	QSV 4"	QSV 6"	QSV 9"	QSV 10"	QSV 12"
A	99	115	115	178	178	215.5	250	276
B	70	100	145	178	254	311	375	410
C	-	132	132	149	170	250	300	330
D	55	86	125	159	228.6	286	335	380
E	19	22	24	35	41	44	56	56
F-9 No.	38	066	095	130	190	240	279	330
No. of holes	4	4	4	4	8	8	12	12
H	7	7	9	9	11	11	17	14

Technical Data of Pneumatic Butterfly Valve (mm)

Code Size	QSV 1"	QSV 2"	QSV 3"	QSV 4"	QSV 6"	QSV 9"	QSV 10"	QSV 12"
A	164	237	243	246	362	375	477	478
B	64	95	95	65	177	200	245	260
C	70	100	145	178	254	311	375	410
D	55	86	125	159	228.6	286	335	380
E	19	22	24	35	41	44	56	56
F-9 No.	38	066	095	130	190	240	279	330
No. of holes	4	4	4	4	8	8	12	12
H	7	7	9	9	11	11	17	14

Salient Features:

- Minimum moving parts
- High quality components
- High Conductivity
- Less down time
- Fail-safe pneumatic version
- Used for system automation